



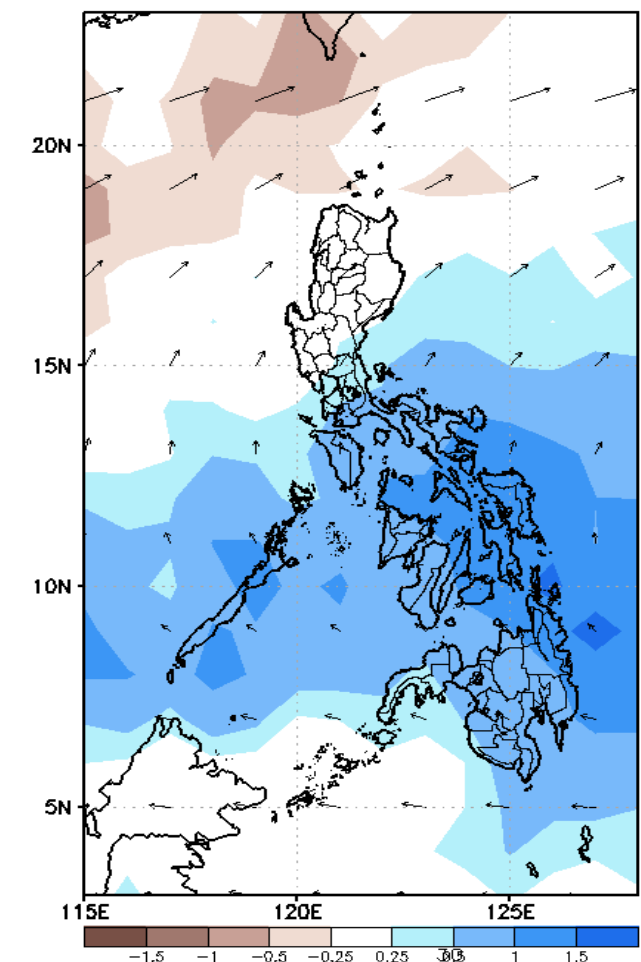
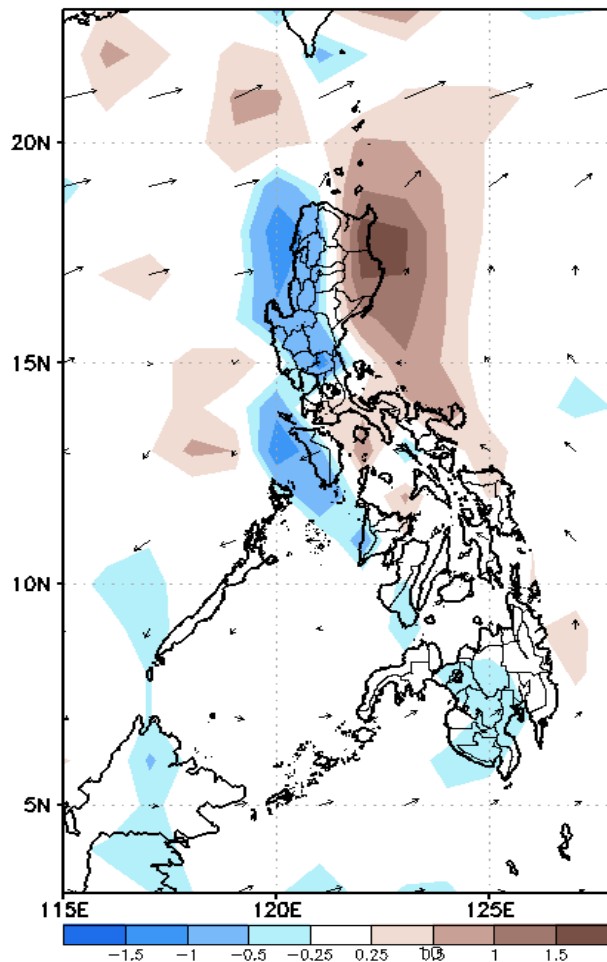
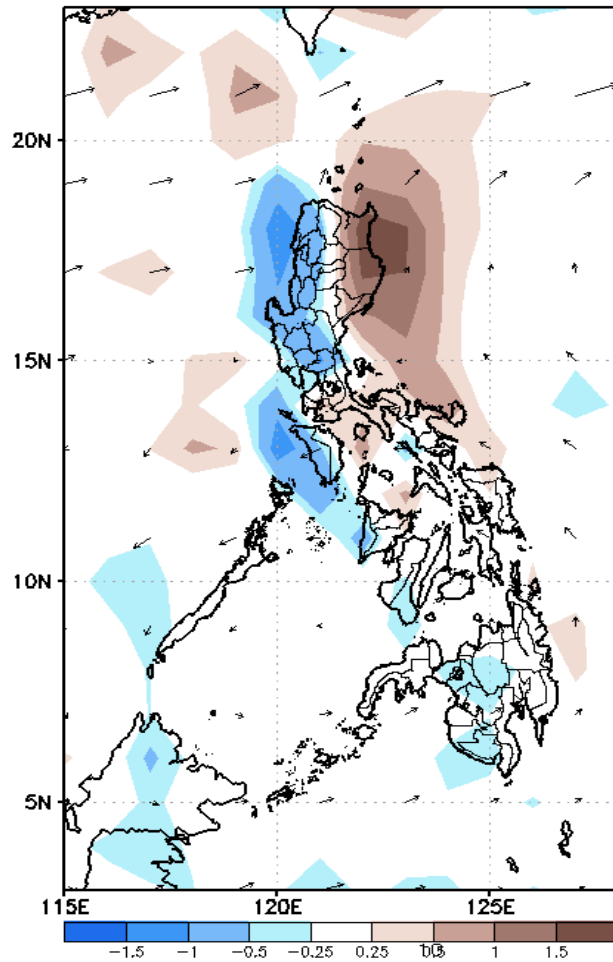
Week 1 & Week 2 Forecast for the Philippines using GEFS Model



GEFS Week-1 Forecasts: Divergence & Wind Anomaly

Week 1: December 14-20, 2020

GEFS Week-1 850-hPa Divergence and Wind Anom Valid: 20201214 - 20201220 GEFS Week-1 700-hPa Divergence and Wind Anom Valid: 20201214 - 20201220 GEFS Week-1 200-hPa Divergence and Wind Anom Valid: 20201214 - 20201220

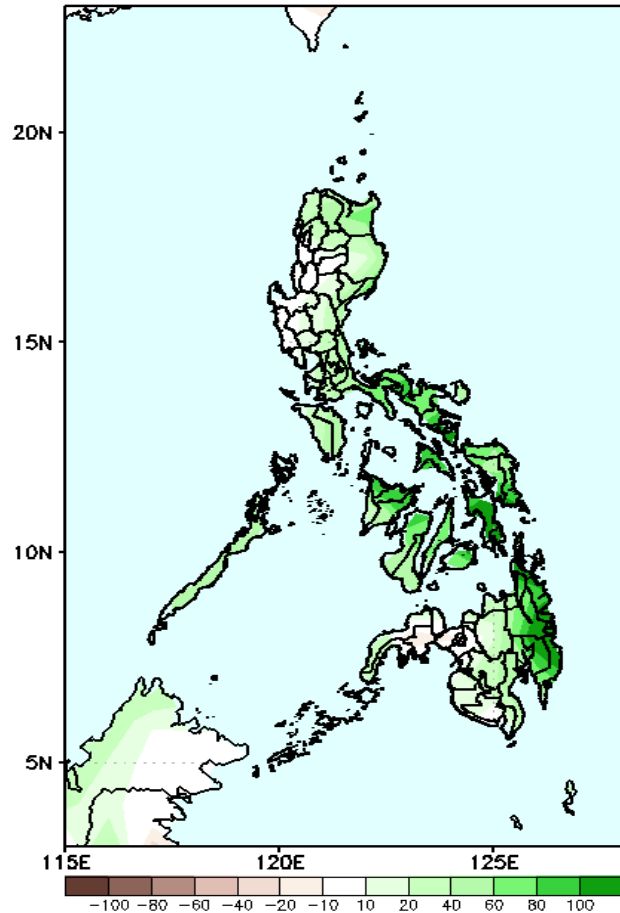


Upper and low level Divergence suggest likelihood of precipitation in most parts of the country. Northeast Monsoon affecting most parts of Luzon while easterlies affecting Visayas and Mindanao during the forecast period.

Precipitation Anomaly and Exceedance Probability > 25/50 mm

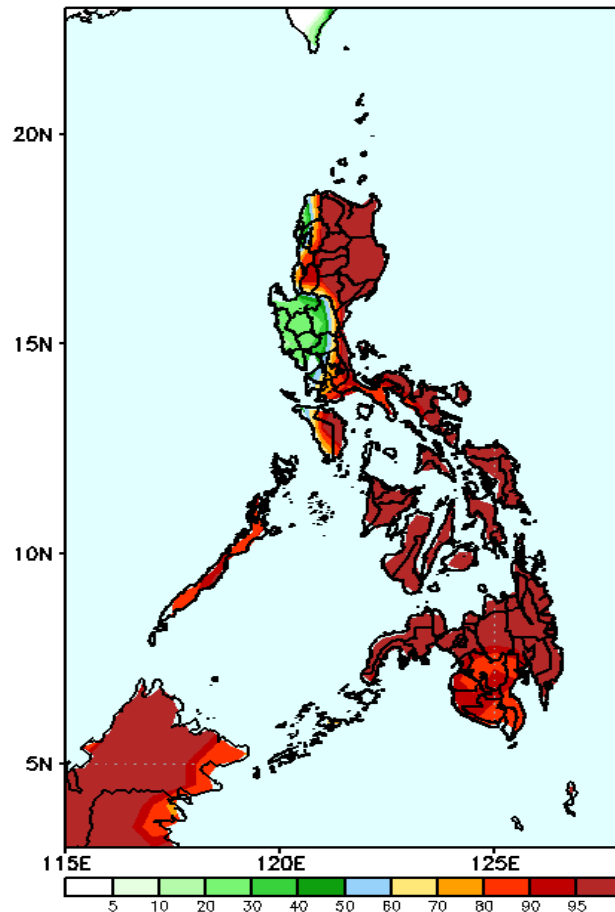
Week 1: December 14-20, 2020

GEFS Week-1 Precip Anomaly
Valid: 20201214 - 20201220



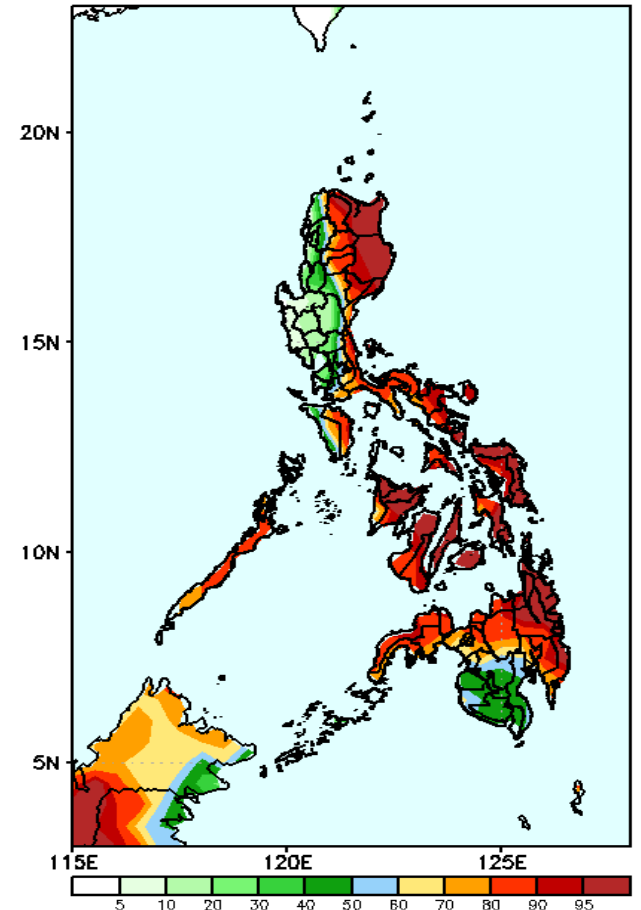
Increase of rainfall up to 100mm is expected in most parts of the country.

GEFS Week-1 Exceedance Prob. > 25mm
Valid: 20201214 - 20201220



High probability of rainfall to exceed 25mm in most parts of the country except in Pangasinan and Central Luzon during the forecast period.

GEFS Week-1 Exceedance Prob. > 50mm
Valid: 20201214 - 20201220

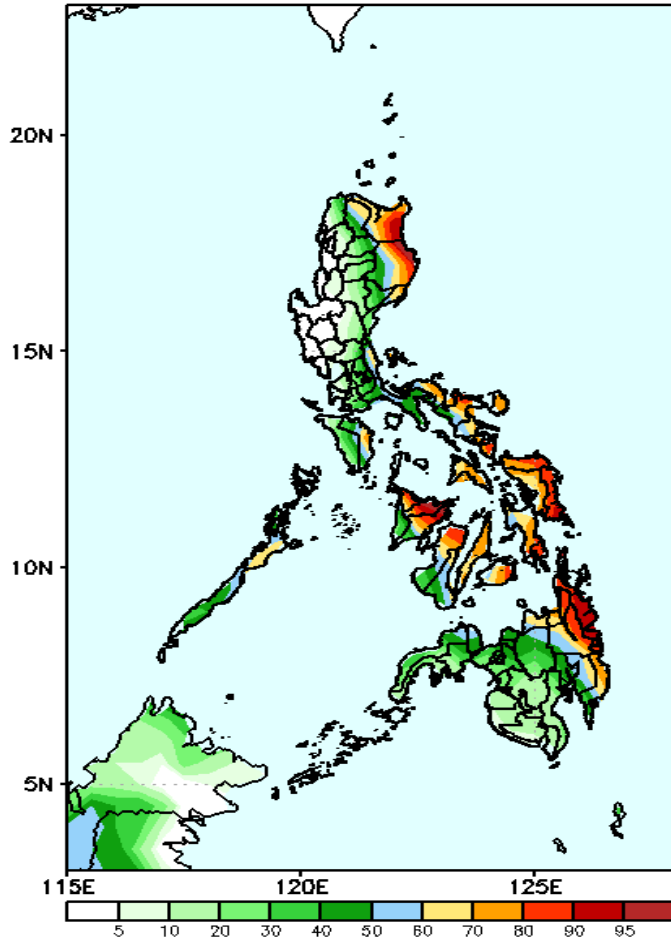


High probability of rainfall to exceed 50mm in most parts of the country except in the western parts of Luzon and southwestern Mindanao during the forecast period.

Exceedance Probability > 100/150/200 mm

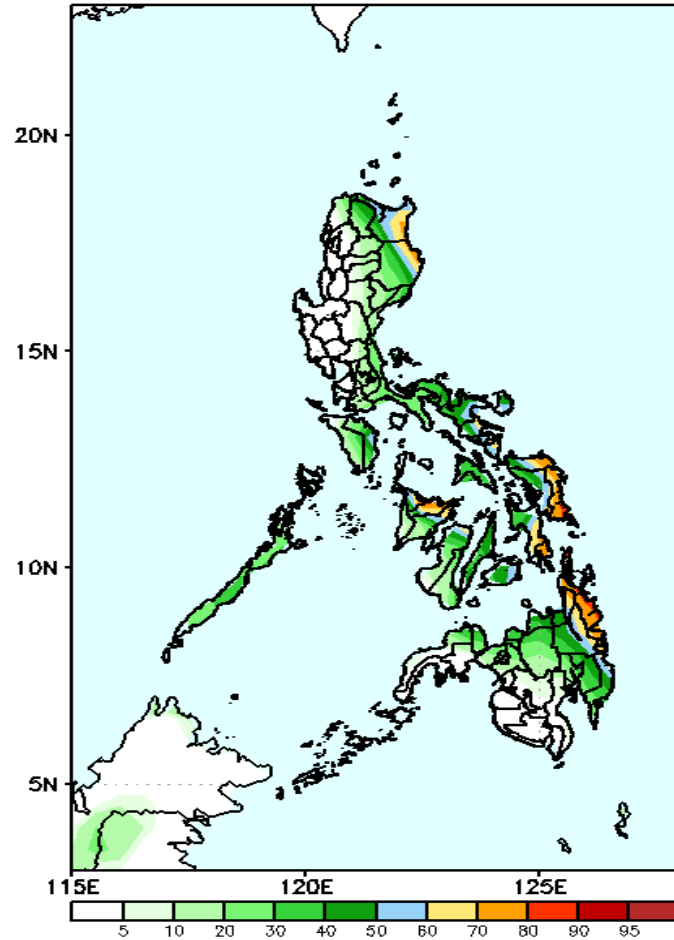
Week 1: December 14-20, 2020

GEFS Week-1 Exceedance Prob. > 100mm
Valid: 20201214 - 20201220



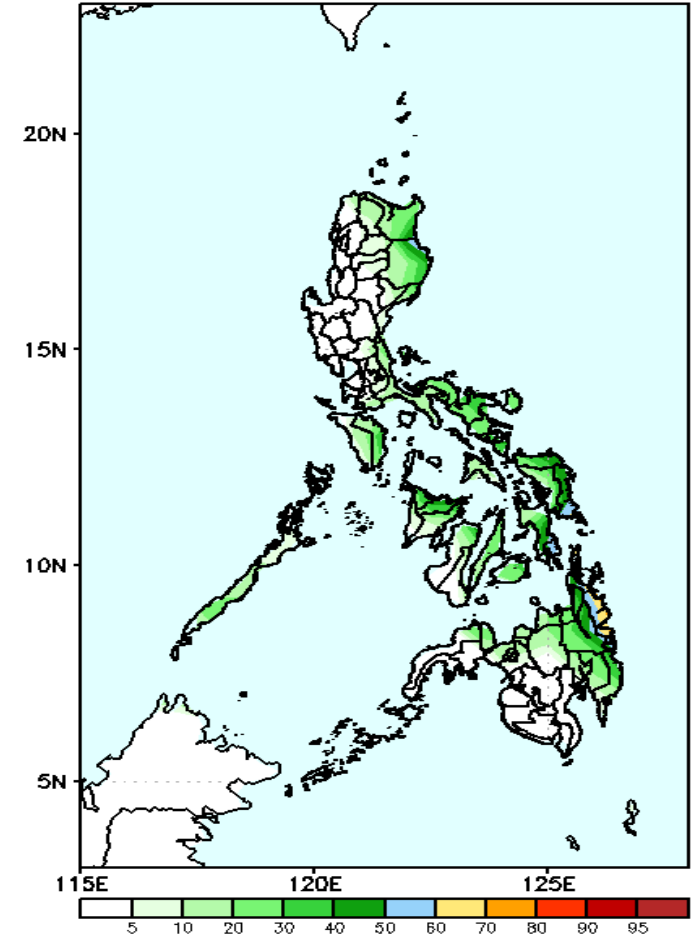
High probability of rainfall to exceed 100mm in Apayao, Cagayan, Isabela, most parts of Visayas and eastern Mindanao while less likely for the rest of the country during the forecast period.

GEFS Week-1 Exceedance Prob. > 150mm
Valid: 20201214 - 20201220



Less probability of rainfall to exceed 150mm in most parts of the country except in Cagayan, Isabela, Capiz, southern Leyte, eastern Samar and eastern Mindanao where there is 70-90% probability during the forecast period.

GEFS Week-1 Exceedance Prob. > 200mm
Valid: 20201214 - 20201220



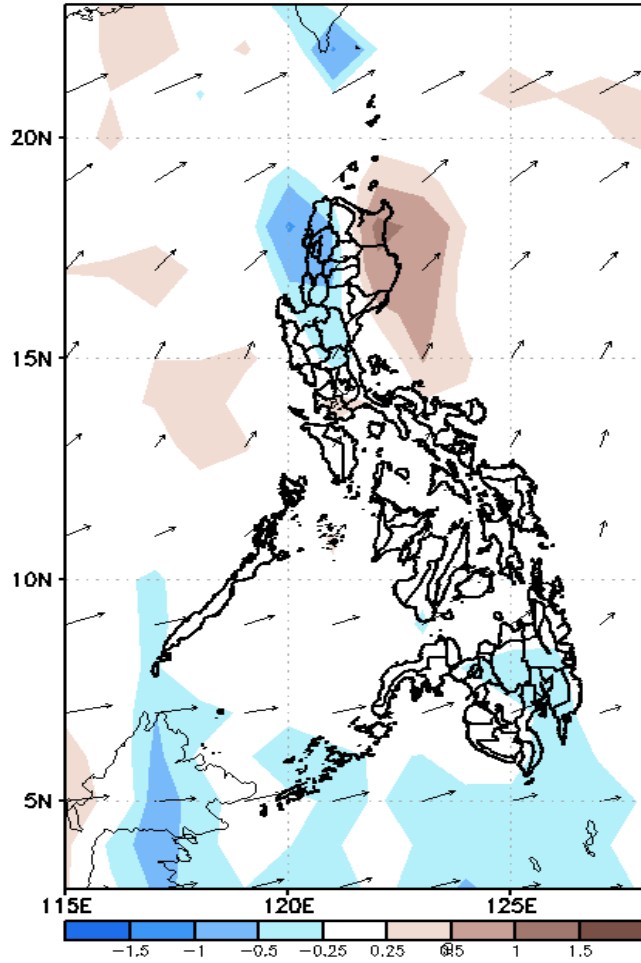
Less probability of rainfall to exceed 200mm in most parts of the country during the forecast period.



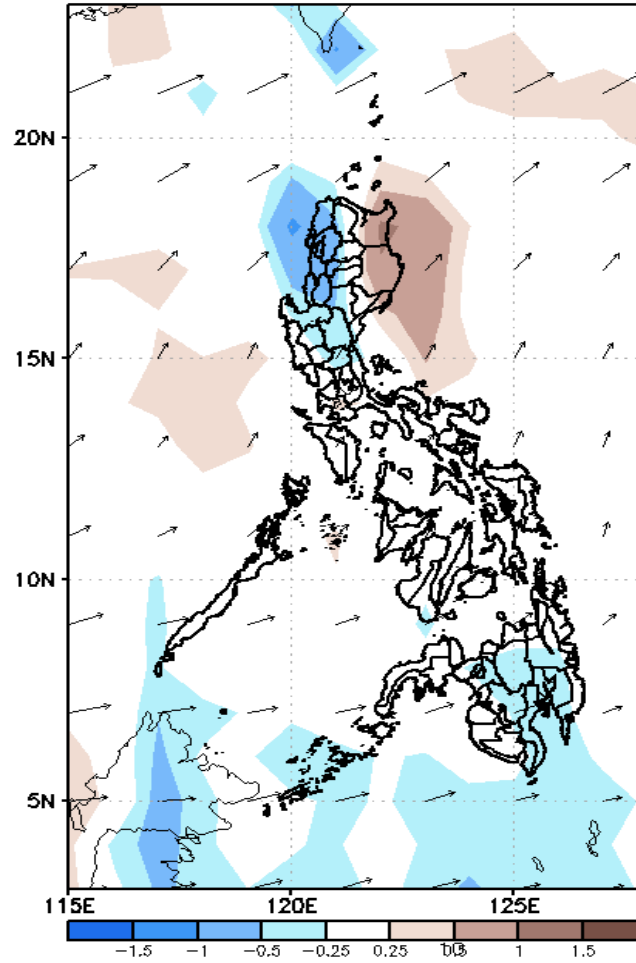
GEFS Week-2 Forecasts: Divergence & Wind Anomaly

Week 2: December 21-27, 2020

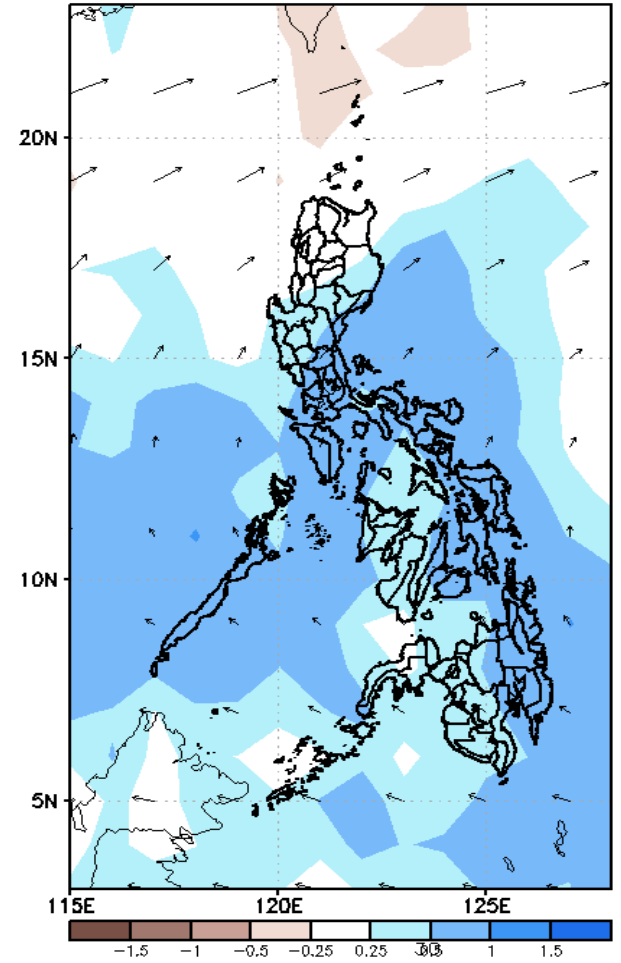
GEFS Week-2 850-hPa Divergence and Wind Anom
Valid: 20201221 - 20201227



GEFS Week-2 700-hPa Divergence and Wind Anom
Valid: 20201221 - 20201227



GEFS week-2 200-hPa Divergence and Wind Anom
Valid: 20201221 - 20201227



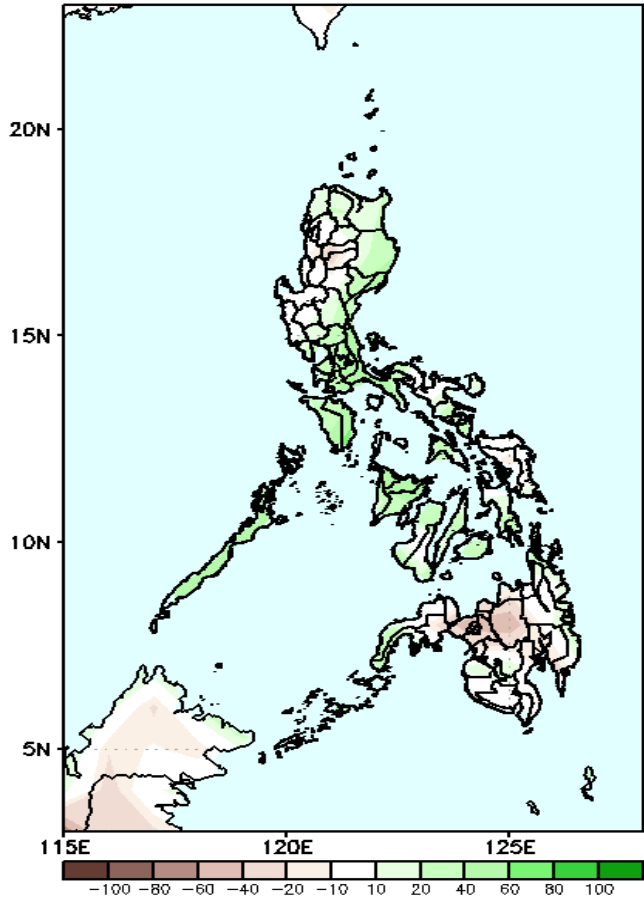
Upper and low level Divergence suggest likelihood of precipitation in most parts of the country. Northeast Monsoon affecting most parts of Luzon and eastern sections of Visayas and Mindanao during the forecast period.



Precipitation Anomaly and Exceedance Probability > 25/50 mm

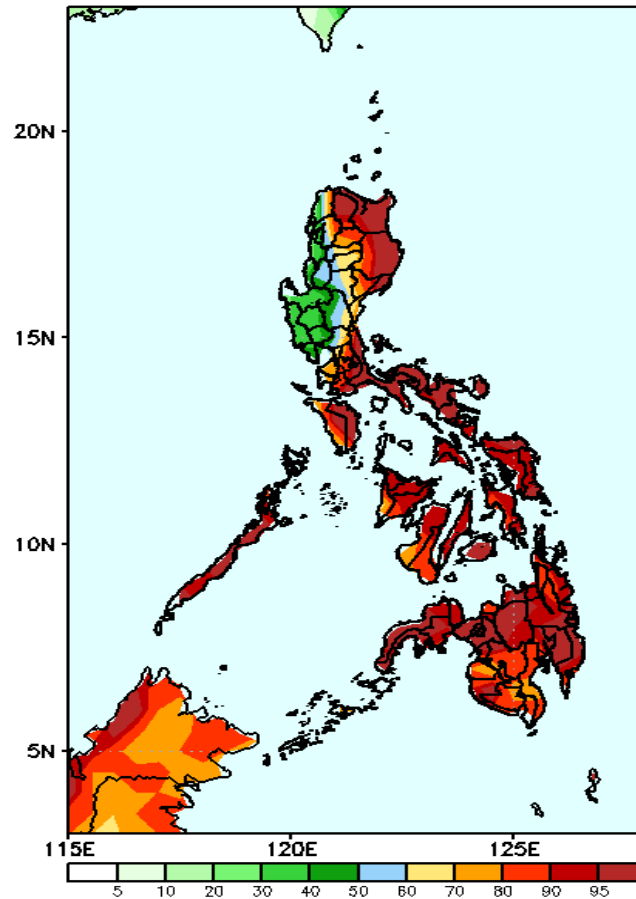
Week 2: December 21-27, 2020

GEFS Week-2 Precip Anomaly
Valid: 20201221 - 20201227



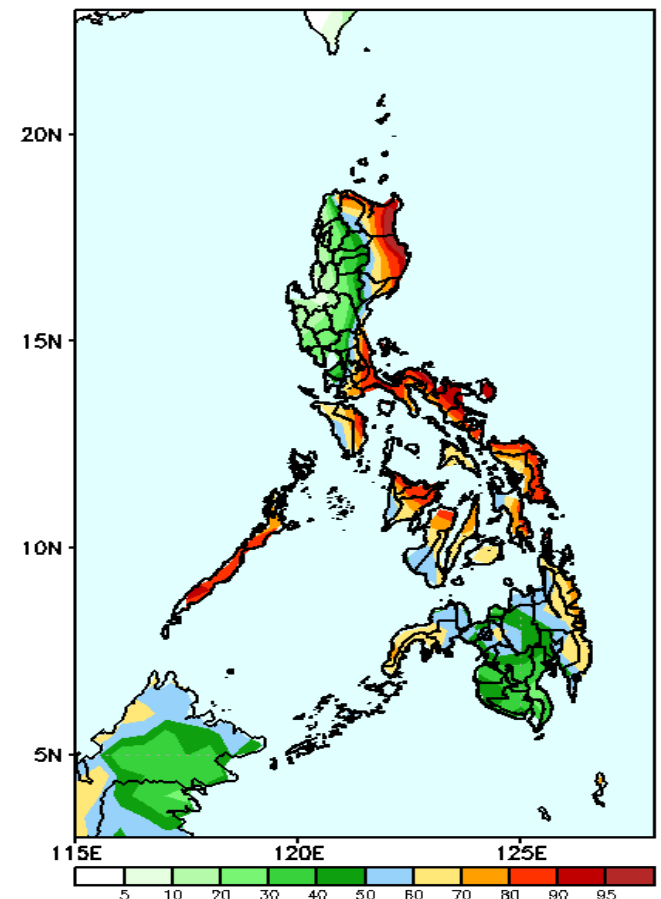
Increase of rainfall of up to 60mm in most parts of eastern Luzon and western Visayas is expected during the forecast period.

GEFS Week-2 Exceedance Prob. > 25mm
Valid: 20201221 - 20201227



High probability of rainfall to exceed 25mm in most parts of the country is expected except in the western parts of Luzon during the forecast period.

GEFS Week-2 Exceedance Prob. > 50mm
Valid: 20201221 - 20201227

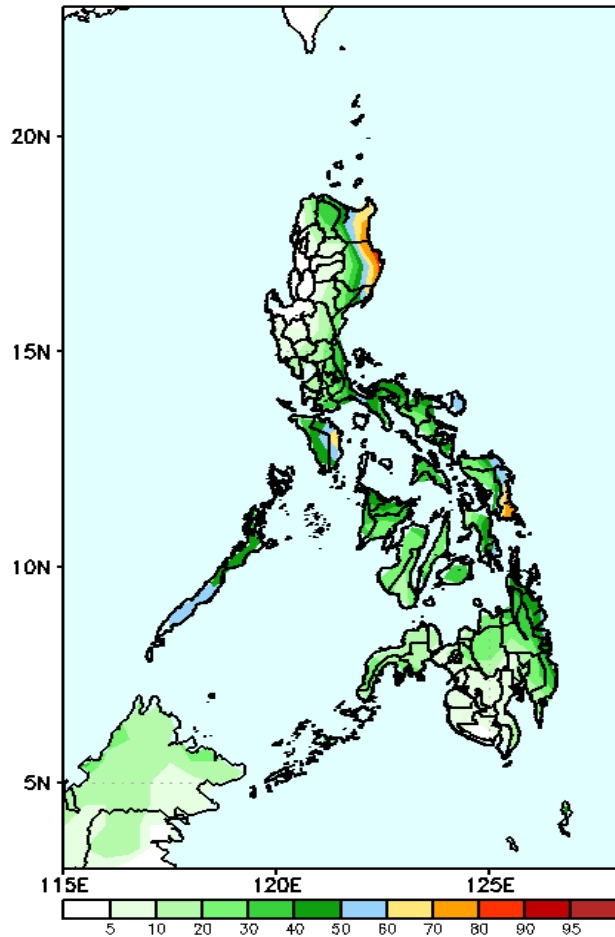


High probability of rainfall to exceed 50mm in the eastern parts of Luzon, Mindoro, Palawan, most parts of Visayas, Zamboanga del Sur & Norte and eastern Mindanao while less likely for the rest of the country during the forecast period.

Exceedance Probability > 100/150/200 mm

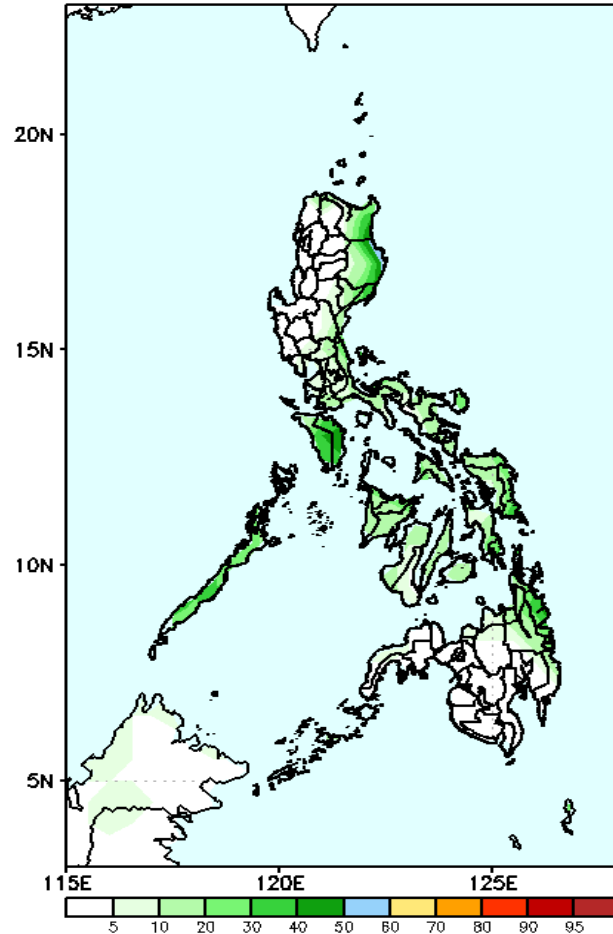
Week 2: December 21-27, 2020

GEFS Week-2 Exceedance Prob. > 100mm
Valid: 20201221 - 20201227



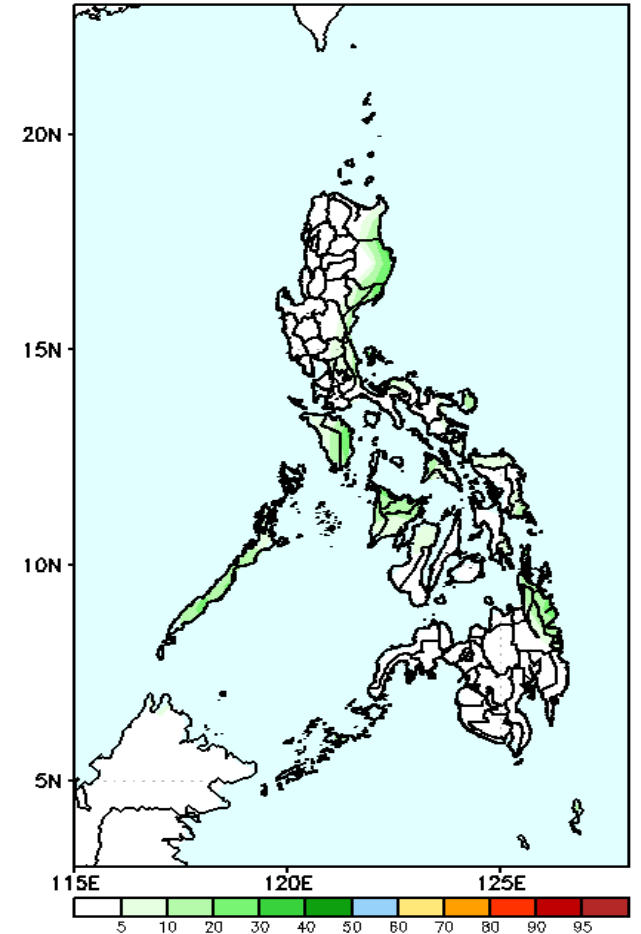
Less probability of rainfall to exceed 100mm in most parts of the country except in Cagayan, Isabela and eastern Samar where there is 50-85% probability during the forecast period.

GEFS Week-2 Exceedance Prob. > 150mm
Valid: 20201221 - 20201227



Less probability of rainfall to exceed 150mm in most parts of the country during the forecast period.

GEFS Week-2 Exceedance Prob. > 200mm
Valid: 20201221 - 20201227

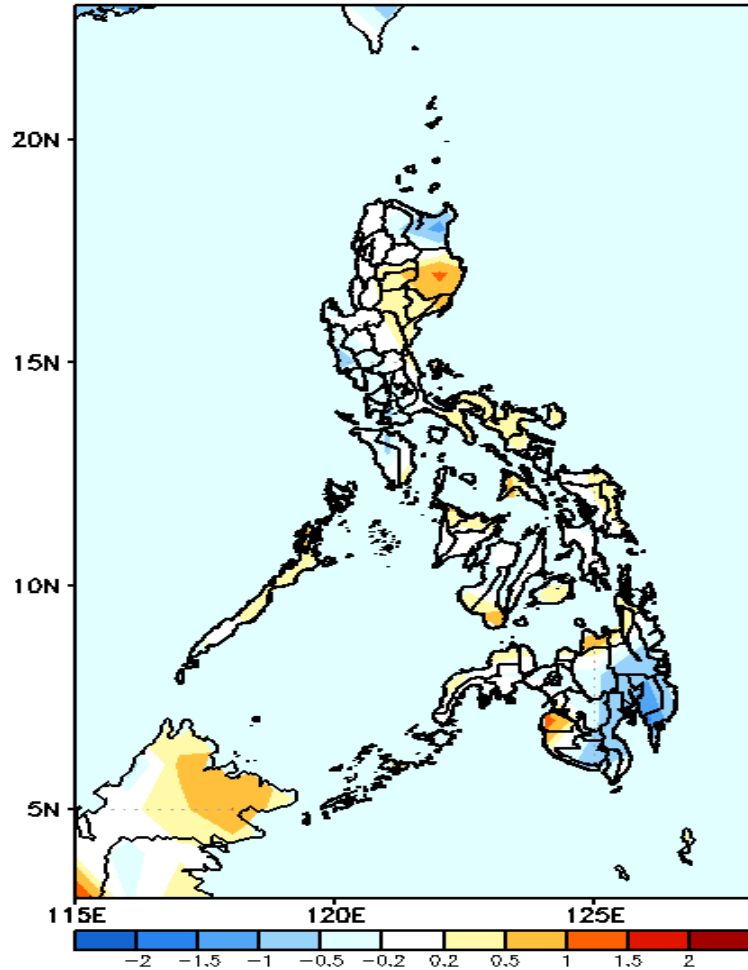


Less probability of rainfall to exceed 200mm in most parts of the country during the forecast period.



GEFS Week-1 & 2 Forecasts: T2m Anomaly

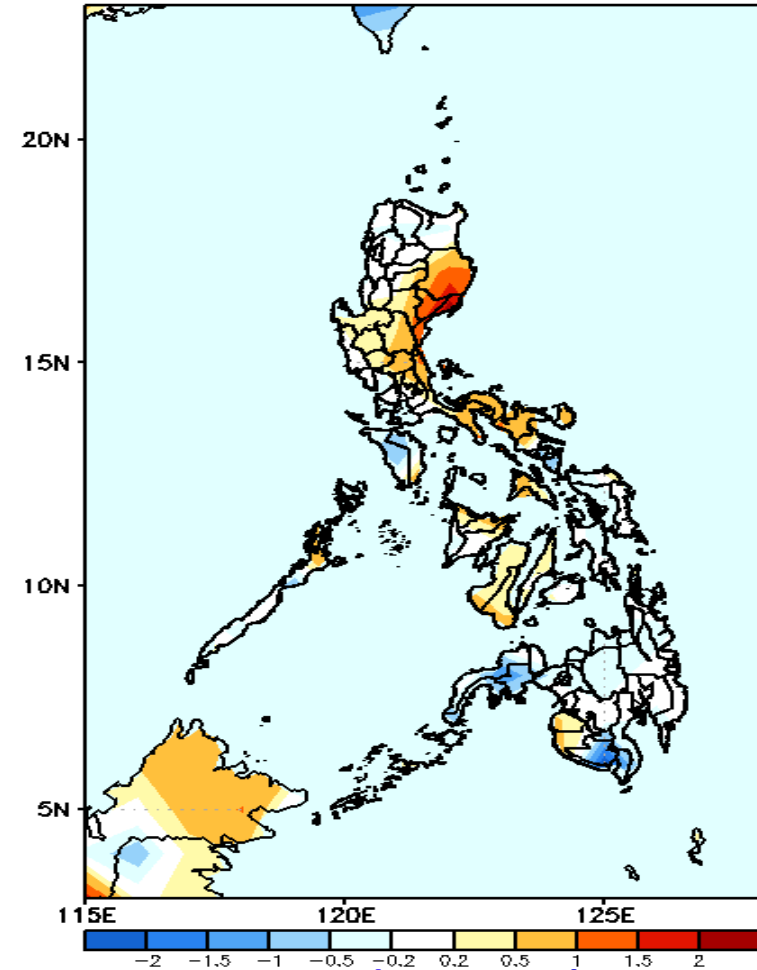
GEFS Week-1 T2m Anomaly
Valid: 20201214 - 20201220



2m Temperature Week 1: December 14-20, 2020

Slightly warmer to warmer than average surface air temperature is expected in most parts of the country except in Cagayan and southern & eastern Mindanao where slightly cooler than average temperature is more likely.

GEFS Week-2 T2m Anomaly
Valid: 20201221 - 20201227



2m Temperature Week 2: December 21-27, 2020

Slightly warmer to warmer than average surface air temperature is expected in most parts of eastern Luzon and western Visayas while the rest of the country will likely receive average to cooler than average temperature.